



# DISIP

## Digital Information System for Industrial Parks

<http://13.233.151.186:8050/>

### What is DISIP:

DISIP is a digital tool which captures, stores, analyses, manages and presents all types of spatial and attribute data pertaining to the industrial parks owned and managed by State Industrial Development Corporations (SIDCs) of West Bengal on one single platform.

### Why is DISIP needed:

There is a lack of a centralized repository of all digital data/information in one place, and which are not easily accessed by public agencies, private agencies, industries, academia, and the public at large. SIDCs endeavour to strengthen GIS based information management and decision support system for streamlining infrastructure & service management of the industrial parks leveraging a digital analytics, which shall ensure ease of business for the industries and sustainability of the industrial activities involving pollution control and environmental protection.

### How DISIP works:

Collect and integrate required data from different Govt. agencies/departments to make a single storehouse of digital data/information and host the DISIP using an open-source web-based GIS platform. West Bengal Industrial Development Corporation (WBIDC) has developed DISIP primarily catering to the requirements of SIDCs and others. WBIDC, being the owner, has placed DISIP on their local server for internal office use and will be hosted on web-platform of WBIDC shortly for public access.

West Bengal Digital Information System

WBIDC logo

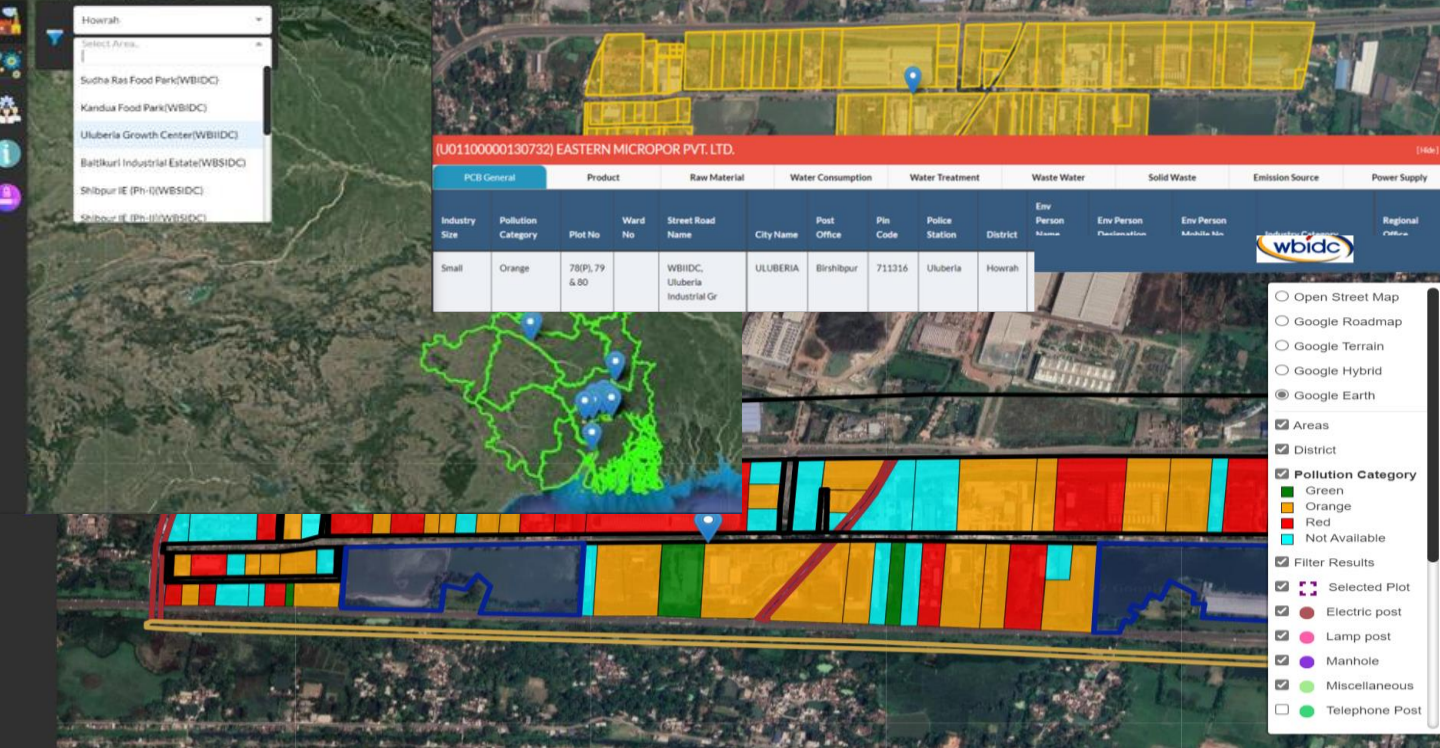
WEST BENGAL logo

Select District

Select Area

DISIP captures data/ information w.r.t criteria to maintain Sustainability Standards for Industrial Parks prescribe by GIZ

- Basic Information
- Economic quality information
- Environmental quality information
- Social quality information
- Infrastructure & services information
- Management systems information
- Legal compliance information

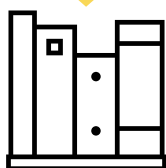


### Key Features of DISIP portal:

- The portal has separate dashboards for industrial parks and industry plots along with query system;
- The portal operates on an open-source web-based GIS software;
- The Portal takes data from Environment Management Information System (EMIS) for tracking environmental performance of industries having consent/clearance from WBPCB;
- The Portal runs an interactive query and information retrieval system designed as per stakeholder requirements
- The portal database can be updated time to time as and when it is required.

DISIP Portal is developed by the WBIDC with the technical support from the Deutsche Gesellschaft für Internationale Zusammenarbeit (GIZ) GmbH under the Project on “Sustainable and Environment-friendly Production, Phase II” commissioned under the ongoing Indo German Development Cooperation by the German Federal Ministry for Economic Cooperation and Development (BMZ).

**Limitations:** Every effort is being put to place the most up-to-date information here on the portal. However, there could be delays in placing all the information here on the portal well in time. The users are advised to cross-check for up-to-date information from other sources to ensure regulatory compliance.



For further information:  
 West Bengal Industrial Development Corporation Ltd., "Protiti"  
 23, Abanindranath Thakur Sarani, Ground Floor  
 Kolkata - 700017, West Bengal, India  
 Email: [wbidc@wbidc.com](mailto:wbidc@wbidc.com)